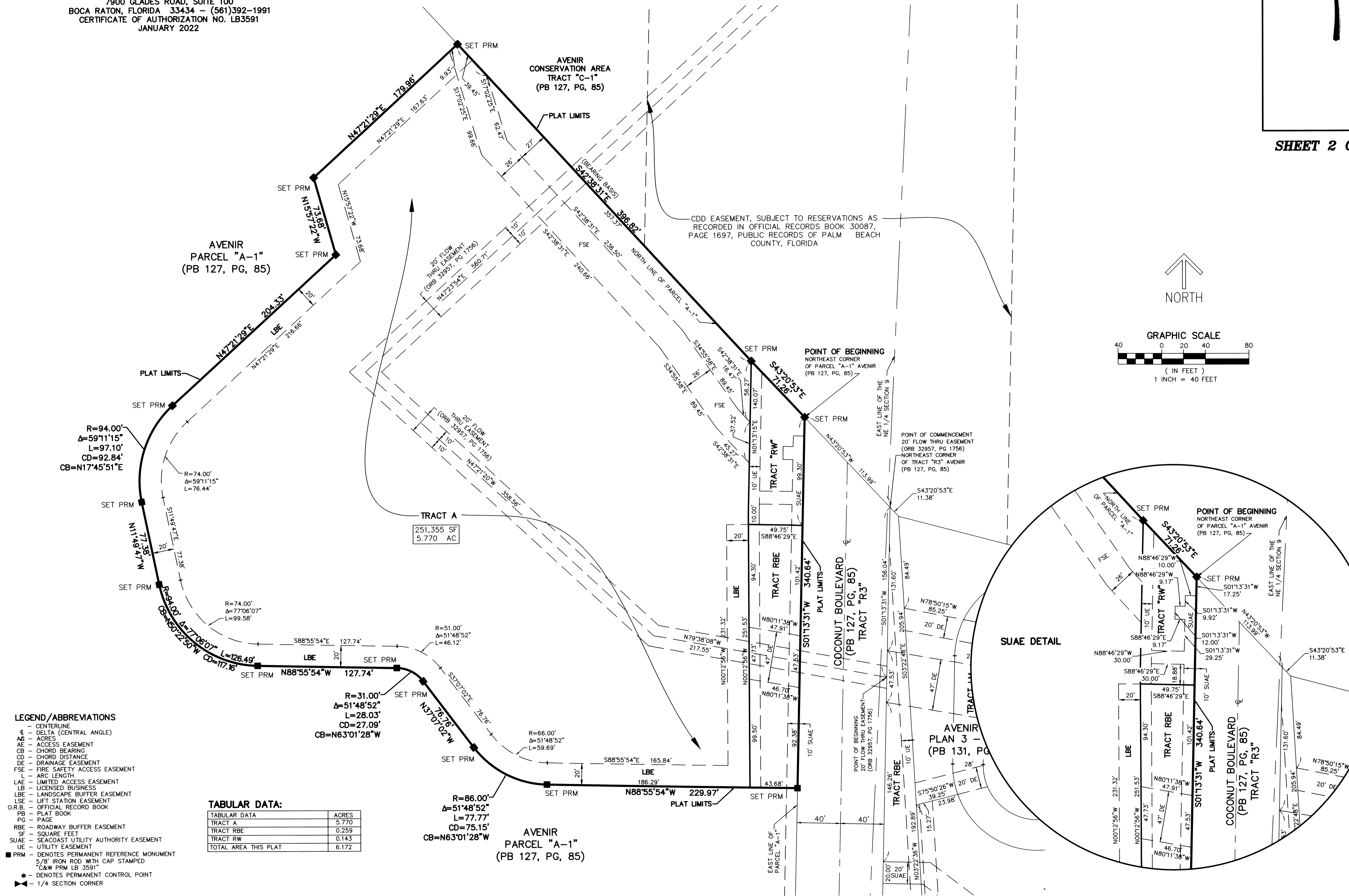


AVENIR PUMP STATION

THIS INSTRUMENT PREPARED BY
 RONNIE L. FURNISS
 OF
CAULFIELD and WHEELER, INC.
 SURVEYORS - ENGINEERS - PLANNERS
 7900 GLADES ROAD, SUITE 100
 BOCA RATON, FLORIDA 33434 - (561)392-1991
 CERTIFICATE OF AUTHORIZATION NO. LB3591
 JANUARY 2022

BEING A REPLAT OF A PORTION OF PARCEL A-1, AVENIR, AS RECORDED
 IN PLAT BOOK 127 PAGE 85, OF THE PUBLIC RECORDS OF PALM BEACH
 COUNTY, FLORIDA LYING IN SECTION 9, TOWNSHIP 42 SOUTH, RANGE 41
 EAST, CITY OF PALM BEACH GARDENS, PALM BEACH COUNTY, FLORIDA.

7
SHEET 2 OF 2



- LEGEND / ABBREVIATIONS**
- CL - CENTERLINE
 - Δ - DELTA (CENTRAL ANGLE)
 - AC - ACRES
 - AE - ACCESS EASEMENT
 - CB - CHORD BEARING
 - CD - CHORD DISTANCE
 - DE - DRAINAGE EASEMENT
 - FSE - FIRE SAFETY ACCESS EASEMENT
 - L - ARC LENGTH
 - LAE - LIMITED ACCESS EASEMENT
 - LB - LICENSED BUSINESS
 - LBE - LANDSCAPE BUFFER EASEMENT
 - LSE - LIFT STATION EASEMENT
 - O.R.B. - OFFICIAL RECORD BOOK
 - PB - PLAT BOOK
 - PG - PAGE
 - SF - SQUARE FEET
 - SVAE - SEACOAST UTILITY AUTHORITY EASEMENT
 - UE - UTILITY EASEMENT
 - PRM - DENOTES PERMANENT REFERENCE MONUMENT
 - 5/8" IRON ROD WITH CAP STAMPED "C&W PRM LB 3591"
 - - DENOTES PERMANENT CONTROL POINT
 - ▲ - 1/4 SECTION CORNER

TABULAR DATA:

TABULAR DATA	ACRES
TRACT A	5.770
TRACT RBE	0.259
TRACT RW	0.143
TOTAL AREA THIS PLAT	6.172

